

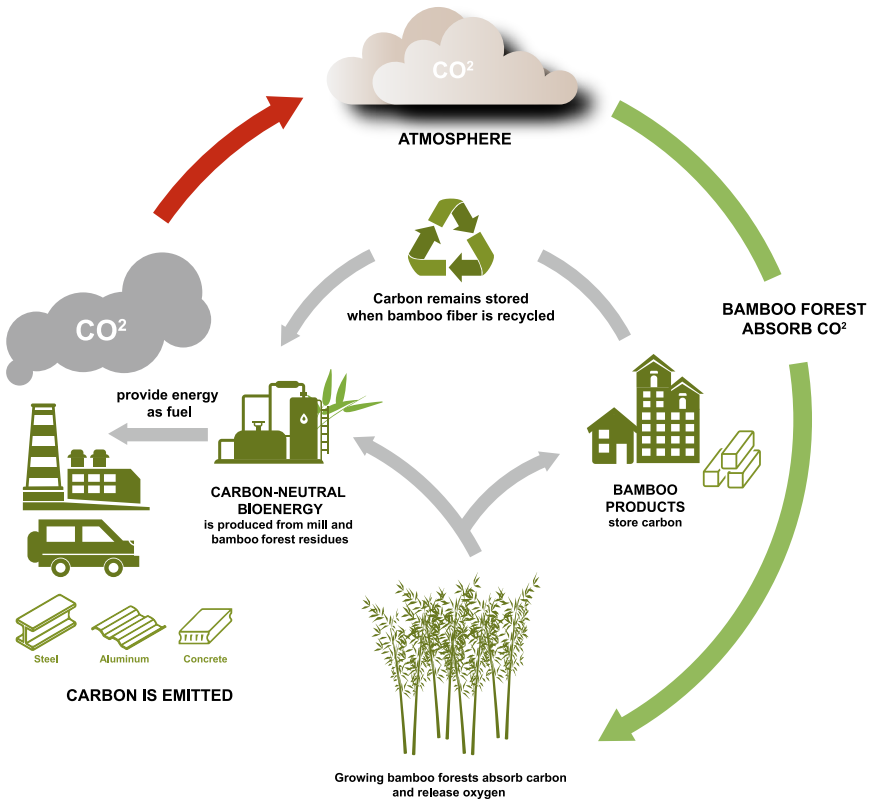


# GREEN · BAMBOO · DASSO



We are facing a significant global warming and rapid depletion of resources. It is our duty and responsibility to choose green and renewable resources and reduce carbon emissions.

## BAMBOO FOREST CONTRIBUTES TO GLOBAL CARBON CYCLE



## SUSTAINABLE LIFE CYCLE OF BAMBOO PRODUCTS

### BAMBOO FOREST

- Bamboo is propagating by its own root.
- The underground roots system conserve water and prevent soil erosion.
- Dasso owns FSC certified bamboo forests.



### HARVESTED

- Bamboo takes only 4-6 years to mature to industrial use
- Dasso harvests from legal resources which passed EUTR due diligence system.
- Selecting harvest (20 plants/hectare/year) without destroying the whole forest.



### PRODUCTION

- Dasso factories certified by ISO9001, ISO14001, ISO45001 have scientific management system during the production.
- Dasso bamboo products use environmental-friendly glue and no harmful chemical addition agent.



### END OF LIFE

- Since bamboo is a biobase organic material, it is biodegradable. It can be buried for natural disintegration.
- It can be used as biofuel to produce energy like electricity.



### USAGE

- Up to 85% raw material use ratio, different sections are used to make various products.
- Dasso bamboo products are fully tested by EU/ North America/Australia standards on durability, stability, fire resistance, slip resistance, and etc.



**dasso Traditional Bamboo**  
EPD No.: S-P-01925



**dasso Strand Woven Bamboo**  
EPD No.: S-P-01926



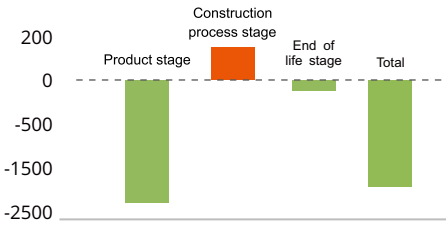
**dasso Ecosolid Bamboo**  
EPD No.: S-P-01927



**dassoXTR and dassoCTECH**  
EPD No.: S-P-01928

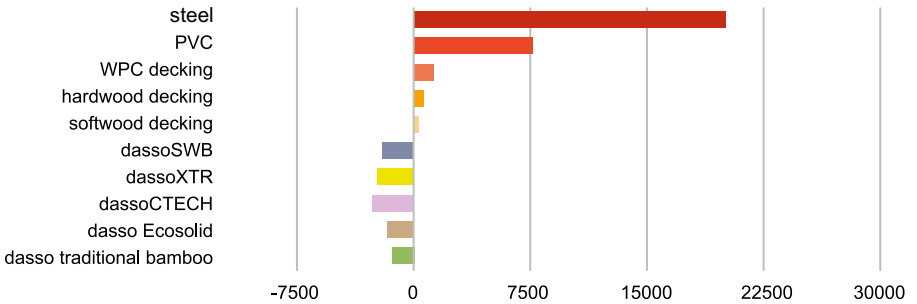
Dasso bamboo products have been EPD certified, indicating a friendly environmental impact during their entire lifespan (35-40 years).

### Carbon footprint in each life stage of bamboo products (kg CO2/M3)



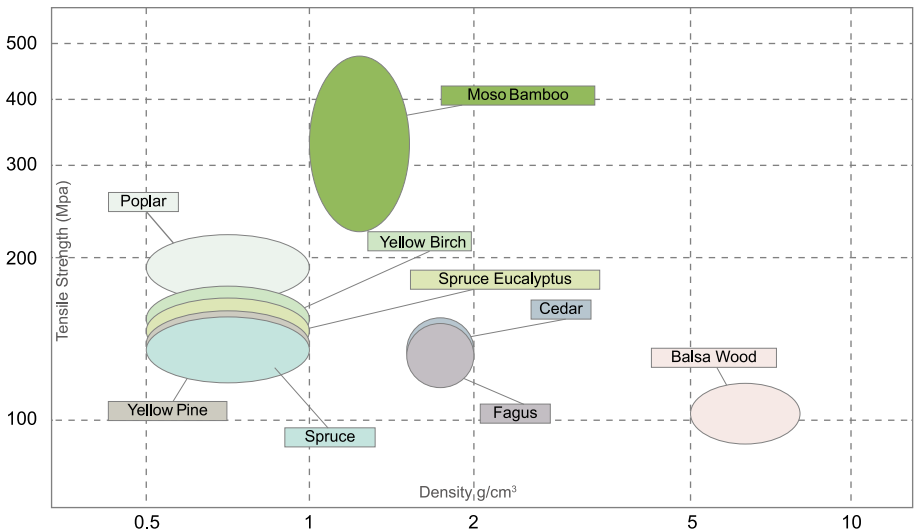
The left figure shows different stage of bamboo product contribute to the main environment impact with different shares, the total emission of CO2 is negative which means "climate positive". The product stage include biological carbon sequestration and all production process.

### Carbon footprint bamboo VS other material (kg CO2/M3)



Bamboo raw materials have good great mechanical properties. They can be processed and made into a variety of products with superior properties that are widely used in various applications and fields.

### Material mechanical property comparison between bamboo and wood



\*compare to other wood material, bamboo has the highest ratio of intensity/density, has the best mechanical property.

### Mechanical property comparison between dasso bamboo exterior board and other exterior wood board

items \ species	dassoXTR	dassoCTECH	IPE	Merbau	Scots Pine
Density (kg/m3)	1150	1200	1100	815	550
Compressive strength (Mpa)	100	93	90	73.5	42
Janka hardness (N)	16,992	17,659	15,620	7,620	2,420
Modulus of elasticity (MOE) (MPa)	19.1	16.7	22.07	15.93	10.08

Dasso Bamboo Products have been EPD Certified & Bamboo Material Provide Credits for the Green Building Certification

### LEED v4/v4.1 BD+C assessment criteria with relation to dasso products

Criteria LEED	dasso Traditional Bamboo	dasso Strand Woven Bamboo	dasso Ecosolid Bamboo	dassoXTR	dassoCTECH
<b>MATERIAL &amp; RESOURCES</b>	Building life-cycle Impact reduction	●	●	●	●
	Building product disclosure and optimization-environmental product declaration	●	●	●	●
	Building product disclosure and optimization-sourcing of raw materials	●	●	●	●
	Building product disclosure and optimization-material ingredients				●
<b>INDOOR ENVIRONMENTAL QUALITY</b>	Low Emitting Materials			●	
	Acoustic performance	●	●	●	●
	Interior Lighting	Natural Color	Natural Color		
<b>INNOVATION</b>	Innovation			●	●

### BREEAM assessment criteria with relation to Dasso products

Criteria BREEAM	dasso Traditional Bamboo	dasso Strand Woven Bamboo	dasso Ecosolid Bamboo	dassoXTR	dassoCTECH
<b>Mat 01</b>	Life cycle impact-Life cycle assessment(LCA)	●	●	●	●
	Environmental product declaration	●	●	●	●
<b>Mat 03</b>	Responsible sourcing of construction products-Sustainable procurement	●	●	●	●
	Responsible sourcing of construction products -Responsible sourcing of construction products	●	●	●	●
<b>Mat 05</b>	Designing for durability and resilience			●	●
<b>Mat 06</b>	Material efficiency	●	●	●	●
<b>Hea 01</b>	Visual comfort	●	●	●	●
	Indoor air quality-Indoor air quality program			●	
<b>Hea 02</b>	Indoor air quality-Releases of building products			●	
	Indoor air quality-Measurement of indoor air quality after completion			●	
<b>Hea 04</b>	Thermal comfort			●	●
<b>Hea 05</b>	Acoustic performance	●	●	●	●
<b>Ene 04</b>	Low carbon design			●	●
<b>Inn 01</b>	Hea 02 Indoor air quality			●	
	Mat01 Life cycle impact	●	●	●	●
	Mat03 Responsible sourcing of construction products	●	●	●	●

### Green Star v3.2 assessment criteria with relation to Dasso products

Criteria Green Star	dasso Traditional Bamboo	dasso Strand Woven Bamboo	dasso Ecosolid Bamboo	dassoXTR	dassoCTECH
<b>Materials</b>	MAT-2 Building Reuse			●	●
	MAT-3 Sustainable Materials	●	●	●	●
	MAT-4 Low Emitting Material	●	●	●	●
	MAT-6 Timber	●	●	●	●
<b>Energy</b>	ENE-1 Energy			●	●
	ENE-2 Greenhouse Gas Emissions	●	●	●	●
	ENE-7 Peak Electricity Demand Reduction			●	●
<b>Indoor Environment Quality</b>	IEQ-6 Thermal Comfort			●	●
	IEQ-13 Internal Noise Levels		●		
<b>Innovation</b>	Adaptation and resilience			●	●
	Culture heritage and identity			●	●
	Financial transparency	●	●	●	●
	Material life cycle impacts	●	●	●	●
	Environmental product declarations	●	●	●	●



The mark of responsible forestry  
Ask about FSC® certified material

## Dasso Bamboo Products

*After 27 years of development in bamboo industry, dasso has the most advanced skills, technology (patent owner) and automatic manufacturing equipments. We have gathered talented people to develop a management system that focuses on production and quality control. This enables Dasso to provide bamboo products with consistent superior quality for all kinds of applications.*



dassoFlooring



dassoFurniture



dassoElements



dassoXTR / CTECH



dassoArchitecture



dassoInnovation

## About Dasso

*Founded in 1993, Dasso is the global leader and innovator of the bamboo industry. We provide high quality bamboo products and integrated bamboo solution.*





**Hangzhou Dasuo  
Technology Co.,Ltd**



**Hangzhou Zhuangyi  
Furniture Co.,Ltd**



**Fujian Dasso Industry  
Co., Ltd**



**Zhejiang Daocheng Bamboo  
Industry Co., Ltd**



**Jiangxi Zhushang Bamboo  
Industrial Co.,Ltd**



**Zhujia Gallery**



**Zhejiang Xinhaiye Bamboo  
Technology Co.,Ltd**



**Shunchang Zhujia Bamboo  
Industrial Co.,Ltd**



**dasso sustainable  
bamboo forest**



**dasso China**

Add: Xinhe, Linpu, Xiaoshan, Hangzhou, China 311251

Tel: 86.0571.5716.3765

Fax: 86.0571.5716.3700

Email: [info@dassoGroup.com](mailto:info@dassoGroup.com)

Web: [www.dassoGroup.com](http://www.dassoGroup.com)

**dasso USA**

Add: 6060 Boat Rock Blvd, Suite 800, Atlanta, GA 30336

Tel: 1.404.691.6872

Fax: 1.404.691.6870

Email: [info@dassousa.com](mailto:info@dassousa.com)

Web: [dassoxt.com](http://dassoxt.com)